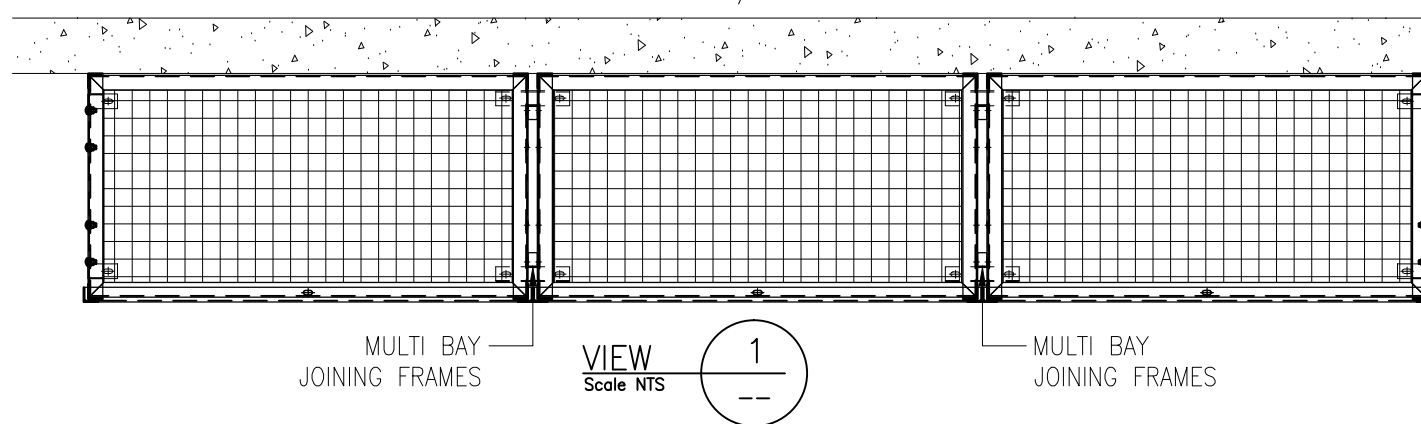


LINE OF WALL/BUILDING



NOTES! DPTI STANDARD = 25x25x3.15 GALV WELDMESH.  
 PANELS TO BE FABRICATED FROM 40x40x3 EQUAL ANGLE, 25x25x3.15 OR 50x50x4.0 GALV WELDMESH. TO BE CONFIRMED PRIOR TO FABRICATION.  
 LINSH OUTSIDE WELDS TO SMOOTH FINISH. HOT DIP GALV ALL PANELS, & REMOVE ANY EXCESS SHARP ZINC COATING CAUSED BY GALV PROCESS.

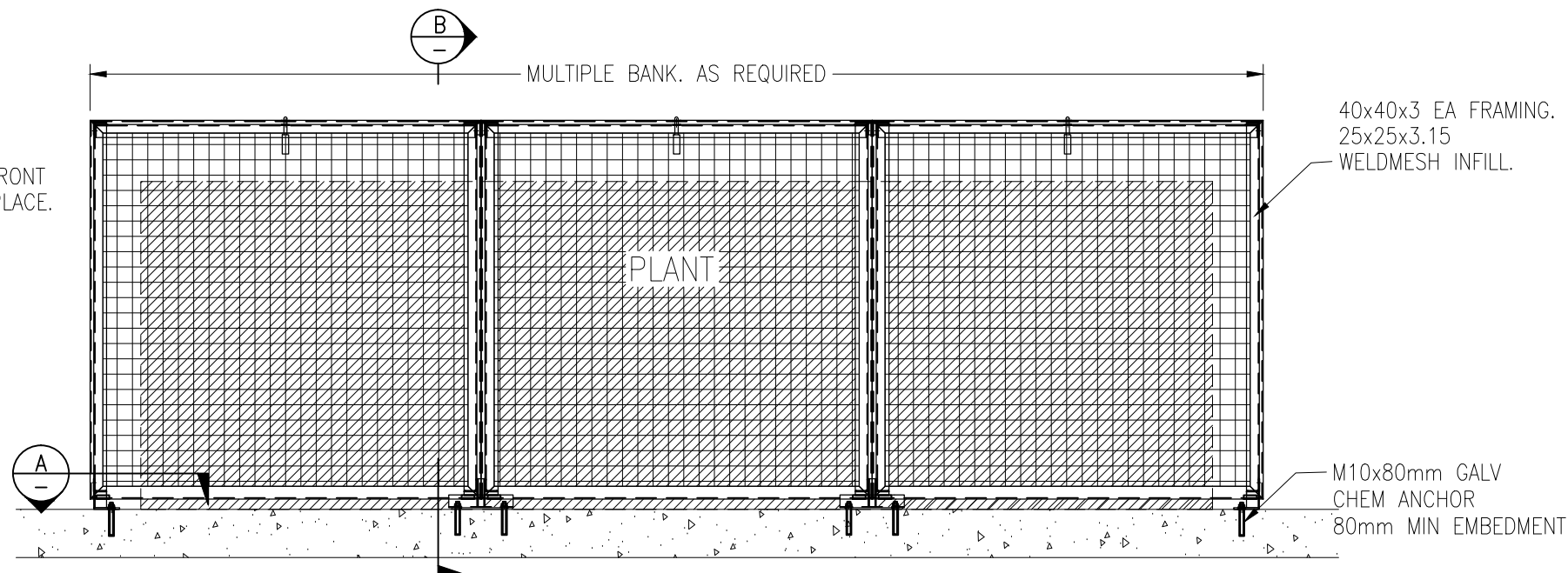
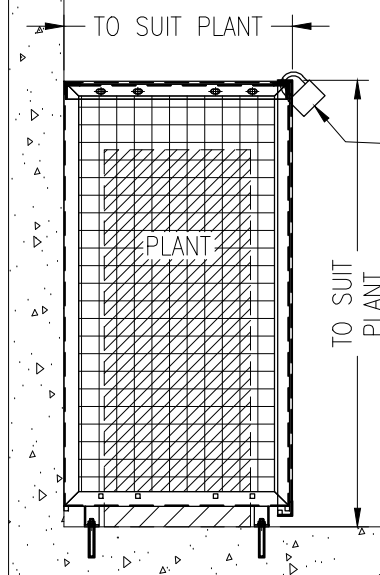
PANELS TO INTERLOCK ON ASSEMBLY, BOLT SIDE & TOP PANELS TOGETHER.  
 PADLOCK TO SECURE FRONT PANEL IN PLACE.  
 FIX IN PLACE WITH M10 CHEM ANCHOR, 80mm MIN EMBEDMENT.

WHERE POSSIBLE, PANELS TO BE SUPPLIED 'FLAT PACKED' TO SITE.  
 SPECIAL ORDERS MAY REQUIRE WORKSHOP ASSEMBLY, AND SOME SITE ASSEMBLY.  
 IF SITE WELDING IS REQUIRED, ALL WELDS TO BE TOUCHED UP WITH ZINC RICH PRIMER, AND NEAT APPLICATION OF SILVERFROST.

CONDENSER CAGES STOCK SIZES.  
 OR AS PER ORDER.

CAT. NO.	DIMENSIONS		
	Width	Height	Depth
<b>25MM MESH</b>			
090906/25	900	900	600
100906/25	1000	900	600
121006/25	1200	1000	600
121206/25	1200	1200	600
121406/25	1200	1400	600
121606/25	1200	1600	600
121806/25	1200	1800	600
<b>50MM MESH</b>			
090906/50	900	900	600
100906/50	1000	900	600
121006/50	1200	1000	600
121206/50	1200	1200	600
121406/50	1200	1400	600
121606/50	1200	1600	600
121806/50	1200	1800	600

FLOOR MOUNTED STYLE standard or optional WALL MOUNT



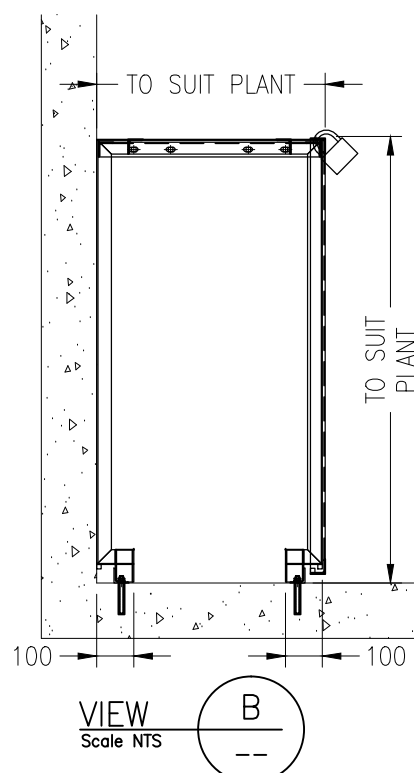
40x40x3 EA FRAMING.  
 25x25x3.15 WELDMESH INFILL.

M10x80mm GALV CHEM ANCHOR  
 80mm MIN EMBEDMENT.

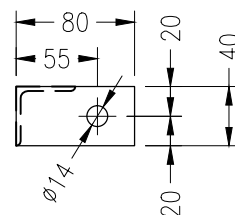
VIEW 2  
 Scale NTS

DETAIL E1 MULTI PANEL PLANT ENCLOSURE ELEVATION

FABRICATED SIZE TO SUIT ORDER  
 40x40x3 ANGLE FRAME  
 25x25x3.15 GALV WELDMESH  
 REMOVE ALL SHARP EDGES. HOT DIP GALV  
 M10 CHEM/MECH ANCHORS



VIEW B  
 Scale NTS



VIEW A  
 NTS  
 BASE PLATE DETAIL  
 5mm BASE PLATE  
 FIX WITH M10 CHEM/MECH ANCHOR  
 TYPICAL DETAIL

# SAXON ENGINEERING

23 HEATH STREET LONSDALE  
 SOUTH AUSTRALIA 5160  
 AUSTRALIA. Ph 08 8187 2888. Fax 08 8326 8654  
 EMAIL. sales@saxonengineering.com.au  
 admin@saxonengineering.com.au

THIS DOCUMENT IS COPYRIGHT AND REMAINS THE PROPERTY OF SAXON ENGINEERING, AND MUST NOT BE USED, REPRODUCED OR COPIED, WHOLLY OR IN PART, WITHOUT THE WRITTEN PERMISSION OF SAXON ENGINEERING.

0	--	---/---/---		
0	ISSUE FOR INFORMATION	13/07/17		
REV	DESCRIPTION	DATE		
TITLE: PLANT ENCLOSURE MULTIPLE BAY ENCLOSURE TYPICAL DETAILS				
SITE:				
CLIENT:				
SCALE (S) AS SHOWN		JOB No:		
DRAWN	CHECKED	SIZE	DRAWING NUMBER	REV.
TAG		A3	PE-01-02	0
13/07/17				