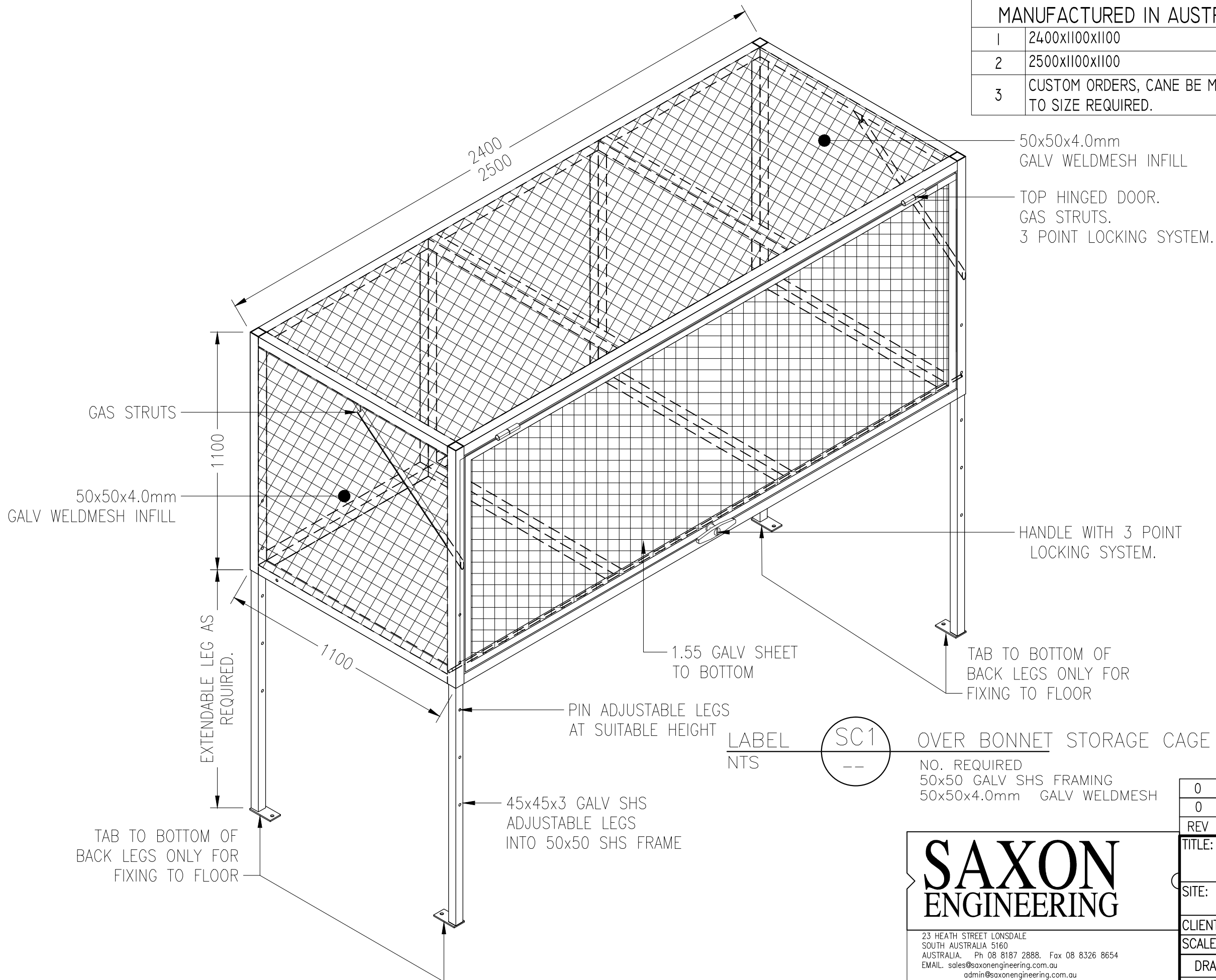


CAGE STANDARD SIZES

CAGES AVAILABLE IN GALV OR POWDERCOAT FINISH.
MANUFACTURED IN AUSTRALIA WITH AUSTRALIAN STEEL

1	2400x1100x1100	50x50x4.0 GALV WELDMESH INFILL
2	2500x1100x1100	50x50x4.0 GALV WELDMESH INFILL
3	CUSTOM ORDERS, CANE BE MADE TO SIZE REQUIRED.	50x50x4.0 GALV WELDMESH INFILL



LABEL SC1 OVER BONNET STORAGE CAGE
NTS

NO. REQUIRED
50x50 GALV SHS FRAMING
50x50x4.0mm GALV WELDMESH

SAXON ENGINEERING

23 HEATH STREET LONSDALE
SOUTH AUSTRALIA 5160
AUSTRALIA. Ph 08 8187 2888. Fax 08 8326 8654
EMAIL. sales@saxonengineering.com.au
admin@saxonengineering.com.au

THIS DOCUMENT IS COPYRIGHT AND REMAINS THE PROPERTY OF SAXON ENGINEERING, AND MUST NOT BE USED, REPRODUCED OR COPIED, WHOLLY OR IN PART, WITHOUT THE WRITTEN PERMISSION OF SAXON ENGINEERING.

0	--	--/--/--
0	ISSUE FOR FABRICATION	6/05/19
REV	DESCRIPTION	DATE

TITLE: OVER BONNET STORAGE CAGE
ENCLOSED/50x50x4.0 GALV WELDMESH
1.55 GALV SHEET BOTTOM

SITE:

CLIENT:

SCALE (S) AS SHOWN JOB No:

DRAWN	CHECKED	SIZE	DRAWING NUMBER	REV.
-------	---------	------	----------------	------

TAG		A3	OSC-01-02	0
-----	--	----	-----------	---

6/05/19				
---------	--	--	--	--