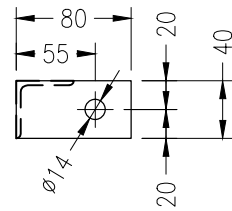
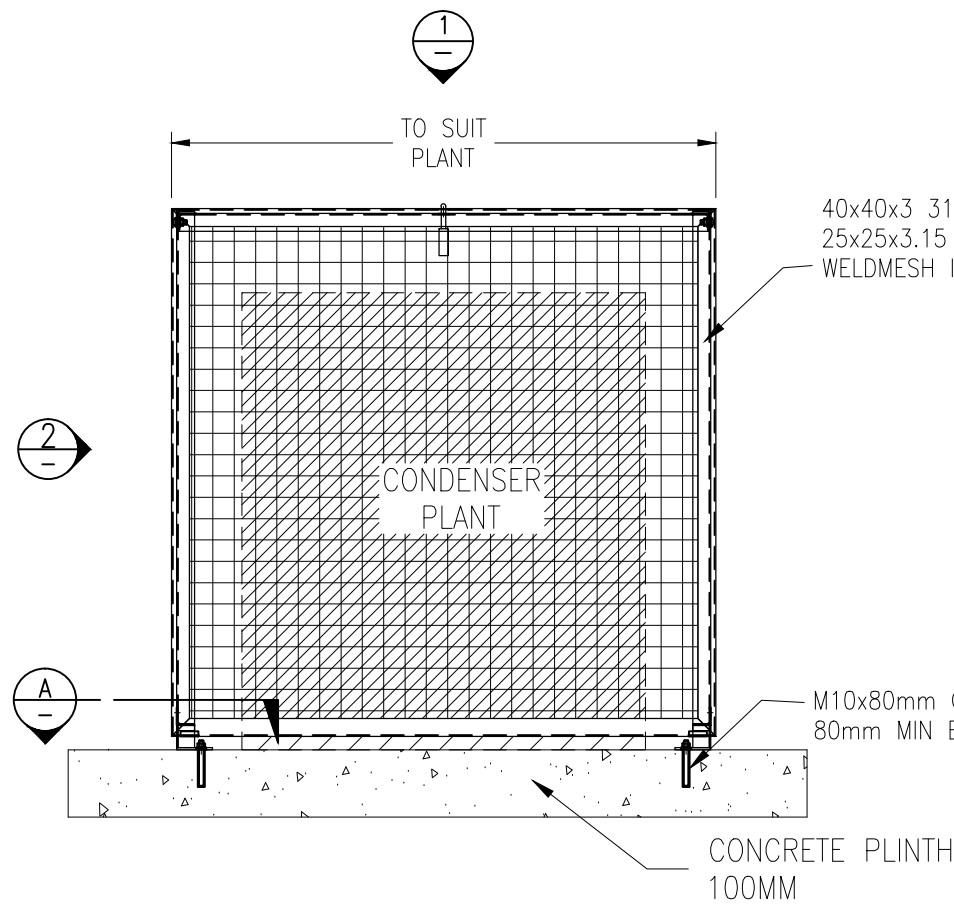


VIEW 1
Scale NTS

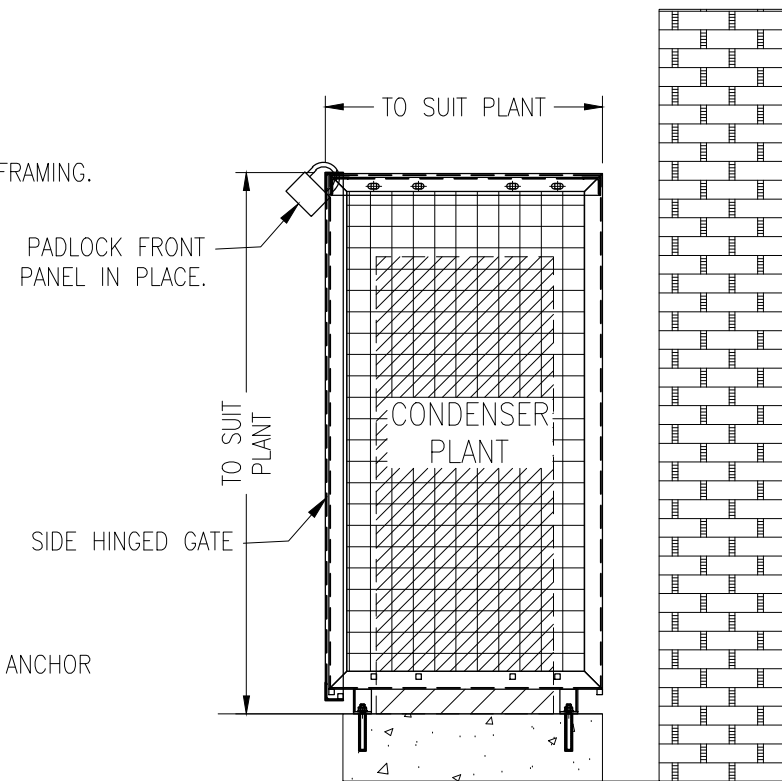


VIEW A BASE PLATE DETAIL
NTS
5mm BASE PLATE
FIX WITH M10 CHEM/MECH ANCHOR
TYPICAL DETAIL

- NOTES! QUEENSLAND GOVT. DETE STANDARD.
- 25X25X3 GALV STEEL WELDMESH.
 - PANELS TO BE FABRICATED FROM 50X50X6 GALV STEEL EQUAL ANGLE, TO BE CONFIRMED PRIOR TO FABRICATION.
 - 30X30X2 GALV GATE FRAME, SIDE HINGED TO ENCLOSURE.
 - LINSH OUTSIDE WELDS TO SMOOTH FINISH.
 - PANELS TO INTERLOCK ON ASSEMBLY, BOLT SIDE & TOP PANELS TOGETHER.
 - PADLOCK ARRANGEMENT TO SECURE FRONT PANEL IN PLACE.
 - SIDE OF THE ENCLOSURE HAVING REFRIGERATION AND ELECTRIC CONNECTIONS TO BE 300 MM CLEAR OF CONDENSING UNIT.
 - MINIMUM 200 CLEARANCE BETWEEN FRONT OF CONDENSING UNIT AND ENCLOSURE GATE.
 - FIX IN PLACE WITH M10 CHEM ANCHOR, 80mm MIN EMBEDMENT.
 - WHERE POSSIBLE, PANELS TO BE SUPPLIED 'FLAT PACKED' TO SITE.
 - SPECIAL ORDERS MAY REQUIRE WORKSHOP ASSEMBLY, AND SOME SITE ASSEMBLY.
 - IF SITE WELDING IS REQUIRED, ALL WELDS TO BE TOUCHED UP WITH ZINC RICHPRIMER, AND NEAT APPLICATION OF SILVERFROST.



DETAIL E1 PLANT ENCLOSURE ELEVATION
FABRICATED SIZE TO SUIT ORDER
50X50X6 GALVANISED EQUAL ANGLE FRAME
30X30X2 GALV GATE FRAME
25X25X3 GALV STEEL MESH
M10 CHEM/MECH ANCHORS



VIEW 2
Scale NTS

OPTIONS: ENCLOSURES AVAILABLE AS PRE-GAVANISED OR HOT DIP GALVANISED

SAXON ENGINEERING

23 HEATH STREET LONSDALE
SOUTH AUSTRALIA 5160
AUSTRALIA. Ph 08 8187 2888. Fax 08 8326 8654
EMAIL. sales@saxonengineering.com.au
admin@saxonengineering.com.au

THIS DOCUMENT IS COPYRIGHT AND REMAINS THE PROPERTY OF SAXON ENGINEERING, AND MUST NOT BE USED, REPRODUCED OR COPIED, WHOLLY OR IN PART, WITHOUT THE WRITTEN PERMISSION OF SAXON ENGINEERING.

0	--	--/--/--		
0	ISSUE FOR INFORMATION	--/--/--		
REV	DESCRIPTION	DATE		
TITLE: QLD GOVT. DETE SPECS. PLANT ENCLOSURE SINGLE BAY				
SITE:				
CLIENT:				
SCALE (S)	AS SHOWN	JOB No:		
DRAWN	CHECKED	SIZE	DRAWING NUMBER	REV.
TAG		A3	CE-00-00	0
21/07/20				